

PANGE LINQUA


III

P Ange lingua glo-ri-ó-si Córpo-ris mysté-ri-um,
Sangi-nísque pre-ti-ó-si, Quem in mundi pré-ti-um
Fructus ventris gene-ró-si Rex effú-dit génti-um.

2. Nobis da-tus, nobis na-tus Ex intácta Vírgi-ne, Et in
mundo conversá-tus, Sparso verbi sémi-ne, Su- i mo-ras
inco-lá-tus Mi-ro clausit ór-di-ne.

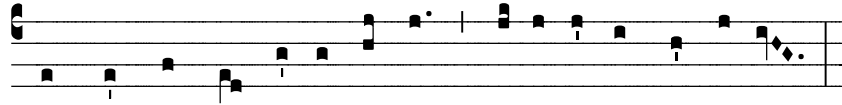
3. In suprémæ nocte cœnæ Re-cúbens cum frátri-bus,
Observá-ta le-ge ple-ne Ci-bis in le-gá-libus, Ci-bum
turbæ du-odénæ Se dat su- is má-ni-bus.

4. Verbum ca-ro, panem ve-rum Verbo carnem éffi-cit:
Fitque sanguis Christi me-rum, Et si sensus dé-fi-cit, Ad

The image shows the musical score for the hymn 'Pange Lingua'. It consists of four systems of music, each with a vocal line and a piano accompaniment line. The first system begins with a large 'P' for piano. The lyrics are in Latin and are printed below the notes. The music is written in a simple, clear style with a treble clef and a common time signature. The lyrics are: 'III P Ange lingua glo-ri-ó-si Córpo-ris mysté-ri-um, Sangi-nísque pre-ti-ó-si, Quem in mundi pré-ti-um Fructus ventris gene-ró-si Rex effú-dit génti-um. 2. Nobis da-tus, nobis na-tus Ex intácta Vírgi-ne, Et in mundo conversá-tus, Sparso verbi sémi-ne, Su- i mo-ras inco-lá-tus Mi-ro clausit ór-di-ne. 3. In suprémæ nocte cœnæ Re-cúbens cum frátri-bus, Observá-ta le-ge ple-ne Ci-bis in le-gá-libus, Ci-bum turbæ du-odénæ Se dat su- is má-ni-bus. 4. Verbum ca-ro, panem ve-rum Verbo carnem éffi-cit: Fitque sanguis Christi me-rum, Et si sensus dé-fi-cit, Ad'.



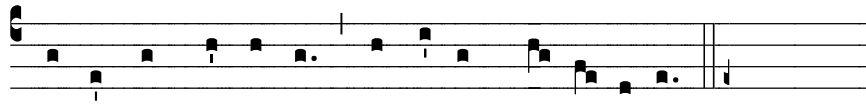
firmándum cor sincé-rum So-la fi-des súffi-cit.



5. TANTUM ERGO Sacraméntum Vene-rémur cérnu- i:



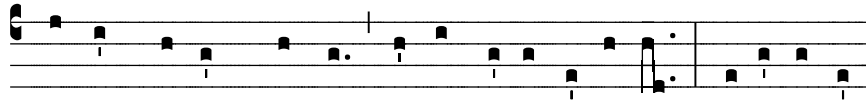
Et antíquum do-cuméntum Novo cedat rí-tu- i: Præstet



fi-des suppleméntum Sensu- um de- féctu- i.



6. Ge-ni-tó-ri, Ge-ni-tóque Laus et ju-bi-lá-ti- o, Sa-lus,



ho-nor, virtus quoque Sit et bene-dícti- o: Procedénti



ab utróque Compar sit lau-dá- ti- o. A-men.